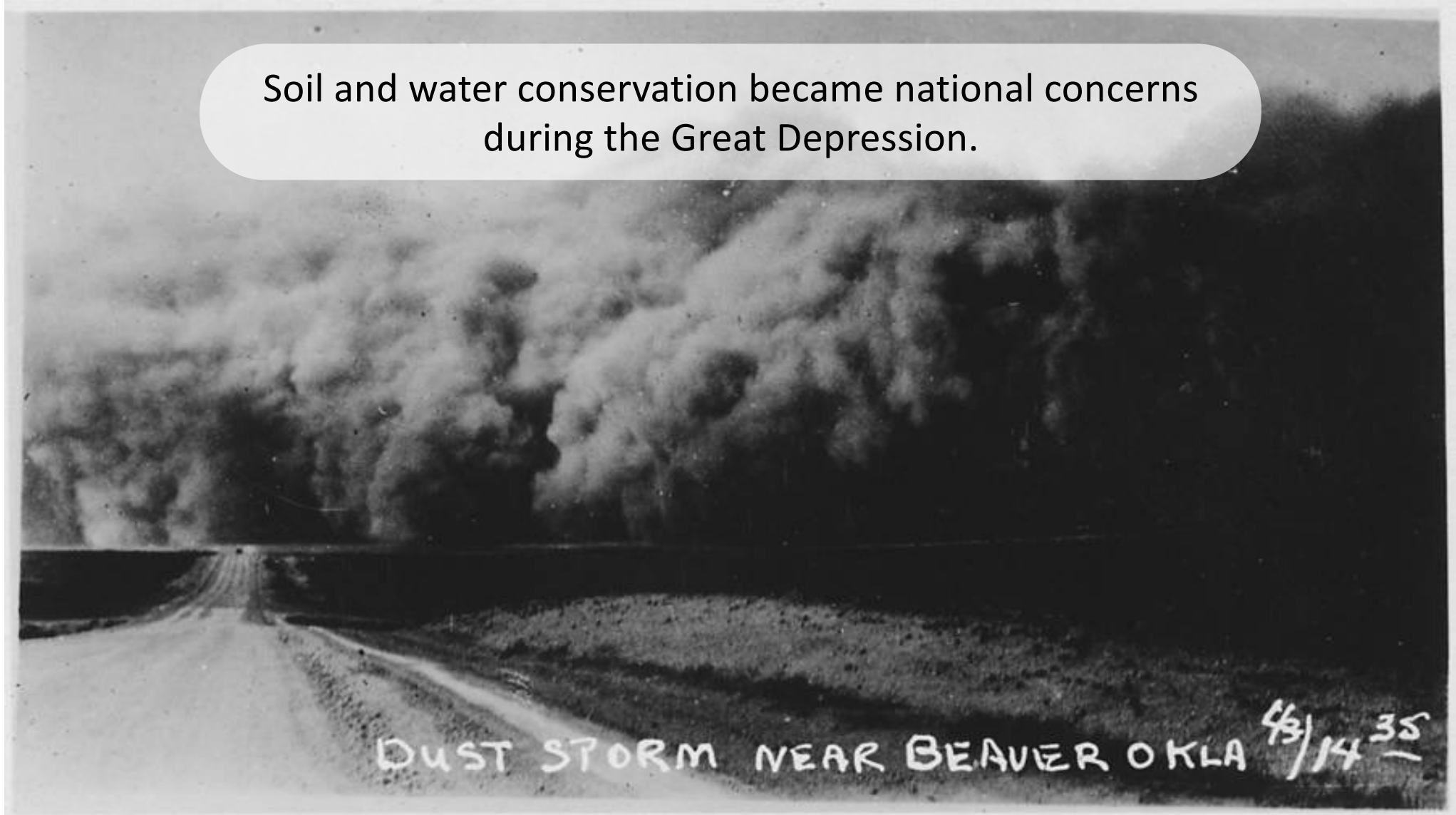


A photograph of green leaves with water droplets on a dark, reflective surface. The leaves are in the foreground, and the background is blurred. The text is overlaid on a semi-transparent white rounded rectangle in the upper right quadrant.

**District Overview:  
NORTH SANTA CLARA  
RESOURCE CONSERVATION DISTRICT**

Soil and water conservation became national concerns during the Great Depression.



DUST STORM NEAR BEAVER OKLA 4/14 35

Nearly a century later,  
we are still facing the same concerns.


Bakersfield, 2015

Image: GlobalPossibilitiesdotorg

Bakersfield, 2015

Image: GlobalPossibilitiesdotorg

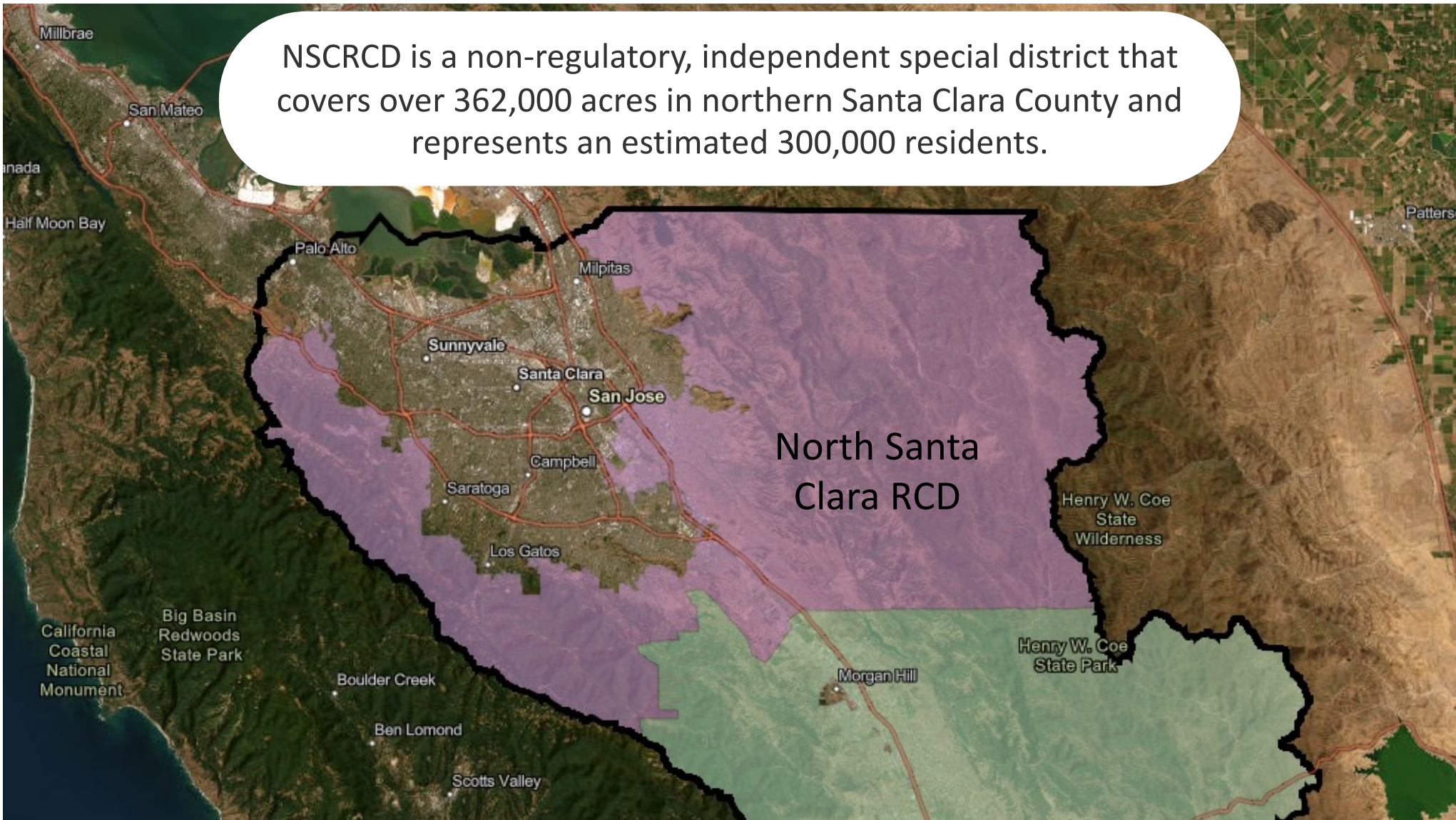




*“Resource conservation districts are important partners to the state in achieving the state’s ever-evolving goals to protect, conserve, restore, and enhance natural resources and to mitigate and adapt to the impacts of climate change.”*

Public Resources Code §9001(a)(3)

NSCRCD is a non-regulatory, independent special district that covers over 362,000 acres in northern Santa Clara County and represents an estimated 300,000 residents.



A photograph of a lush green field of leafy vegetables, possibly cabbages, under a bright sky with a sun flare. The plants are in the foreground, and the background shows a line of trees. The overall scene is vibrant and healthy.

# **Agricultural Resilience**



**Climate Adaptation**



© Roger Castillo 2017

# Habitat Protection & Restoration



# Scientific Research



# Community Engagement



**Collaborations and Partnerships**



Director Jeannie Entin

Vice President Gail Bautista

President Frank Maitski

Director Gerardo Ixteyo Loera

Director Matt Roben

## NSCRCD Board of Directors

<https://www.rcdsantaclara.org/board-of-directors>

## Next Steps

- Visit our website: [www.rcdsantaclara.org](http://www.rcdsantaclara.org)
- Subscribe to our notifications:  
<https://www.rcdsantaclara.org/manage-email-subscriptions-and-notifications>
- Follow us on social media:  
[NextDoor](#) \* [Facebook](#) \* [YouTube](#)
- Contact Executive Director Stephanie Moreno:  
[smoreno@gcrccd.org](mailto:smoreno@gcrccd.org) or 831-235-1799

