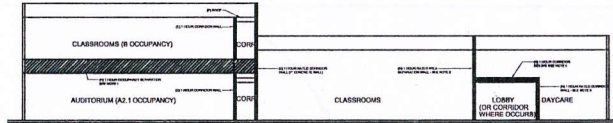
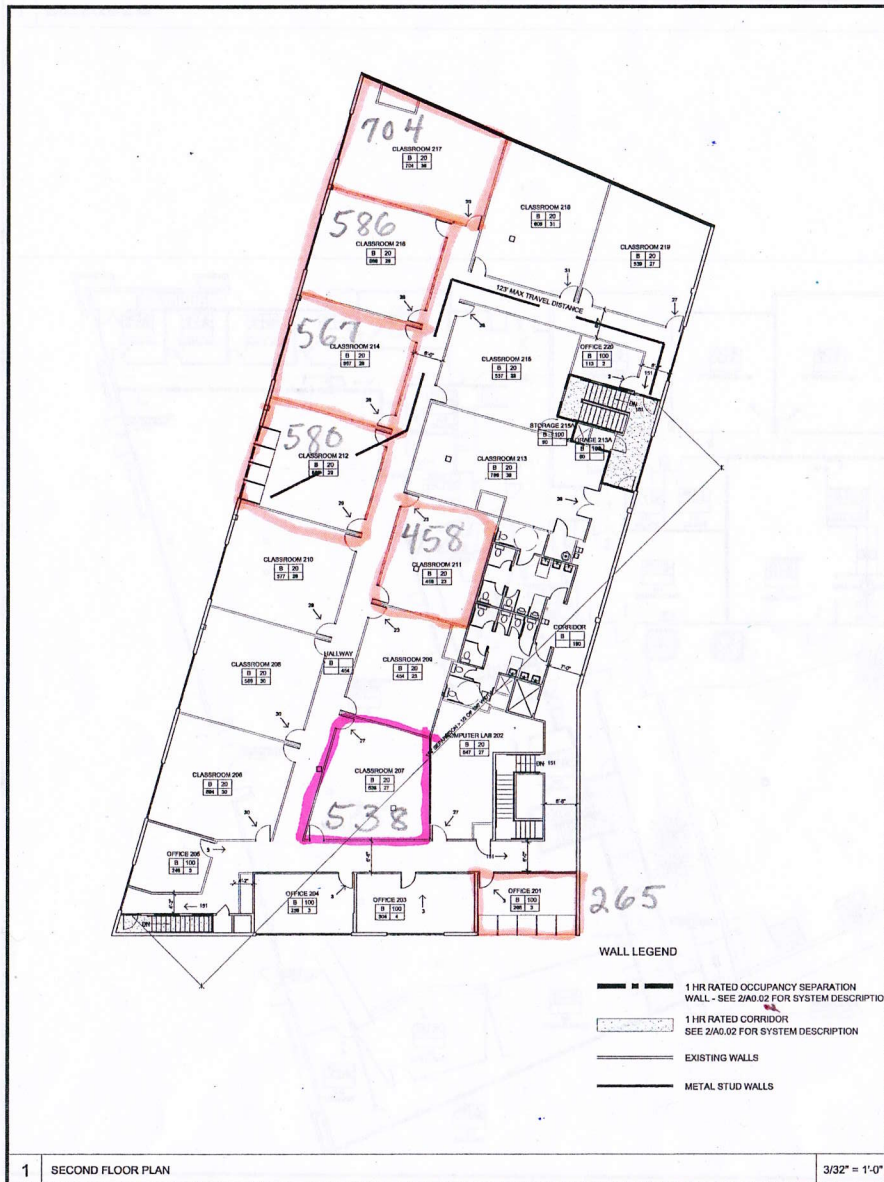


= Rooms available

1560 Berger Drive  
2nd Floor



NOTE:

- PROVIDE 1 HOUR RATED FLOOR CEILING ASSEMBLY PER CYPNUM ASSOCIATION FILE NO. FC 545 CONSISTING OF ONE LAYER 1/2" TYPE X GYPSUM BOARD (NO APPLIED PARALLEL) AT RIGHT ANGLES TO MIN. 2 X 10 WOOD JOISTS 16" ON CENTER (EXISTING) WITH 80 MILE 1/8" LONG, 1/8" DIA. SPACER, 1/4" HEADS AT 4" ON CENTER. WALL PLACED 2" FROM BOARD EDGE JOINTS AND 12" FROM BOARD END JOINTS. WOOD JOISTS ARE SUPPORTING 1-1/4" THICK PLYWOOD SUBFLOOR (EXISTING).
- PROVIDE 1 HOUR RATED OCCUPANCY SEPARATION WALL PER CYPNUM ASSOCIATION FILE NO. WP 1200 CONSISTING OF ONE LAYER 5/8" TYPE X GYPSUM BOARD APPLIED PARALLEL ON AT RIGHT ANGLES TO EACH SIDE OF 3/8" OR 1/2" STEEL STUDS 24" ON CENTER WITH 1" TYPE B DRYWALL SCREWS 1/2" ON CENTER AT VERTICAL JOINTS AND 12" ON CENTER AT FLOOR AND CEILING RUNNERS AND INTERMEDIATE STUDS. JOINTS BRIDGED 24" ON OPPOSITE SIDES. EXTEND WALL FROM FLOOR SLAB TO UNDERSIDE OF ROOF PLYWOOD.
- PROVIDE 1 HOUR RATED CORRIDOR WALL PER CYPNUM ASSOCIATION FILE NO. WP 1200 CONSISTING OF ONE LAYER 5/8" TYPE X GYPSUM BOARD APPLIED PARALLEL ON AT RIGHT ANGLES TO EACH SIDE OF 3/8" OR 1/2" STEEL STUDS 24" ON CENTER WITH 1" TYPE B DRYWALL SCREWS 1/2" ON CENTER AT VERTICAL JOINTS AND 12" ON CENTER AT FLOOR AND CEILING RUNNERS AND INTERMEDIATE STUDS. JOINTS BRIDGED 24" ON OPPOSITE SIDES. EXTEND WALL FROM FLOOR TO 1 HOUR RATED CORRIDOR CEILING CONSTRUCTION.
- PROVIDE 1 HOUR RATED CORRIDOR CEILING PER CYPNUM ASSOCIATION FILE NO. WP 1200 CONSISTING OF ONE LAYER 5/8" TYPE X GYPSUM BOARD APPLIED PARALLEL ON AT RIGHT ANGLES TO EACH SIDE OF 3/8" OR 1/2" STEEL STUDS 24" ON CENTER WITH 1" TYPE B DRYWALL SCREWS 1/2" ON CENTER AT VERTICAL JOINTS AND 12" ON CENTER AT FLOOR AND CEILING RUNNERS AND INTERMEDIATE STUDS. JOINTS BRIDGED 24" ON OPPOSITE SIDES. EXTEND CEILING FROM 1 HOUR RATED WALL TO 1 HOUR RATED WALL.

2 CONCEPTUAL BUILDING SECTION N.T.S.

First Floor	A-3	B (CR)	B (Office)	B (Kitchen)	S-2
Cafeteria	3437			1379	
Kitchen					
Classroom		2430			
Storage Room				645	620
Open Office			1081		
Office			160		
Office			100		
Reception			0		
Break Room			404		
Second Floor					
Classroom		709			
Classroom		842			
Classroom		1005			
Classroom		994			
Classroom		707			
Office					
Office		118			
Office		93			
Office		89			
Office		220			
Office		148			
Office		144			
Office		149			
Office		144			
Conf Rm		221			
Break Rm					
Warehouse					
Square Feet	3437	6695	3071	1379	5105
Factor	.30	.50	.20	.200	.0000
Occupants	115	134	16	7	2
Male Occupants	58	67	8	4	1
WC	Factor 1:100	1.40	1:1-15	1:1-15	1:1-10
Fixtures	1	2	1	1	1
UR	Factor 1:50	1.35	0:1-9	0:1-9	0:1-9
Fixtures	2	2	0	0	0
LAV	Factor 1:40	1.40	1:40	1:40	1:10
Fixtures	2	2	1	1	1
Female Occupants	58	67	8	4	1
WC	Factor 4:51-100	1.30	1:1-15	1:1-15	1:1-10
Fixtures	4	3	1	1	1
LAV	Factor 1:40	1.40	1:40	1:40	1:10
Fixtures	2	2	1	1	1
DF	Factor 1:150	1:150			1:150
Fixtures	1	1			1

**BILL GOULD DESIGN**  
ART & ARCHITECTURE

394-A Umbarger Rd.  
San Jose, CA 95111  
Fax 408.224.9891  
Phone 408.224.9890

General Notes

1560 BERGER DRIVE  
SAN JOSE CONSERVATION CORP'S

DAYCARE AND ADULT  
EDUCATION FACILITY  
SAN JOSE CONSERVATION CORP'S  
1560 BERGER DRIVE  
SAN JOSE CA

No.	Revision/Description	Date
1	Daycare Revision	3/22/08
2	Classroom Revision	3/22/08
3	Final Conditions Revision	04/16/09
4	Final Conditions Revision	11/03/09

CODE PLAN  
SECOND FLOOR

Regulatory Agency Approval

Architect Seal

Project No. 94017  
 Date 06.31.07  
 Drawing No. A0.02